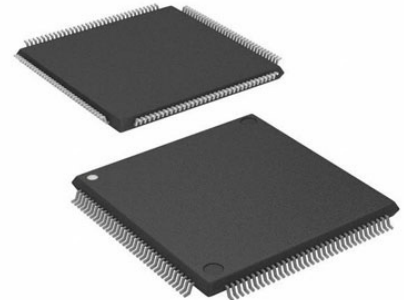


ARM MCU, XMC Family XMC47xx Series Microcontrollers, ARM Cortex-M4, 32bit, 144 MHz, 352 KB, 2 MB

Manufacturers	<a href="#">Infineon Technologies Corporation</a>
Package/Case	144-LQFP
Product Type	Embedded Processors & Controllers
RoHS	
Lifecycle	



Images are for reference only

Please submit RFQ for XMC4700F144K2048AAXQMA1 or [Email to us: sales@ovaga.com](mailto:sales@ovaga.com) We will contact you in 12 hours. [RFQ](#)

## General Description

The XMC4700 device is a member of the XMC4000 family of microcontrollers based on the ARM Cortex-M4 processor core. The growing complexity of today's energy efficient embedded control applications are demanding microcontroller solutions with higher performance CPU cores featuring DSP and FPU capabilities. The XMC4700 family of microcontrollers take advantage of Infineon's decades of experience in the industrial market to provide an optimized solution to meet the performance challenges of today's embedded control applications.

## Features Application

ARM® Cortex Platform concept to allow extensive customization

®-M4 @

144MHz Performance, efficiency and cost competitiveness

2048kB Flash, Accurate analog-mixed signal peripherals

352kB RAM Fast timer/PMW peripheral

Data and IP Protection on Switched mode power supplies:

Flash Power supply designs are subject to ever-increasing requirements. Some of them are fueled by customer demands or industry association guidelines (such as higher power density, communication, modularity or the 80 Plus Titanium efficiency standard).

Supply voltage range: 3.13 - 3.63V Semiconductor technology advances have allowed MCU manufacturers to develop a new class of MCUs, optimized for digital power conversion applications in terms of features and price point. This new market development his what motivates ever more power supply designers to use digital control for SMPS.

6 x CAN nodes Some functionalities that makes XMC4000 suited to motor control application:

EthernetMAC, Rich connectivity: 2x Can nodes, 4-channel serial COM unit (configurable to SPI, I<sup>2</sup>c, I<sup>2</sup>S, UART), USB FS,  
~~USB OTG,~~

SD/MMC UP to 4X 12-bit ADC with a sample time of 70 ns ensure fast reaction times and tighter control loops.

6 channel USIC 4-channel 150 ps HRPWM timer (XMC4200/4400 series)

(configurable to  
SPI, UART,  
IIC, IIS)

External Bus  
Unit

4 x 12-bit  
ADC, 26 input  
channels, 4 x  
parallel  
sampling and  
conversion

2 channel 12bit  
DAC

4 channel  $\Delta\Sigma$   
Demodulator

24 x 16-bit  
special purpose  
timers, dead  
time generation

2 x Position  
Interface

Watch Dog  
Timer, Real  
Time Clock

XMC4000  
Functional  
Safety Package

Package:  
LQFP144

Temperature  
range: -40 -  
125°C

Safety package  
supporting SIL-  
2/3

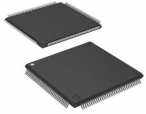
## Related Products

---



[XMC4500F100K1024ACXQSA1](#)

Infineon Technologies Corporation  
100-LQFP



[XMC4500F144F1024ACXQMA1](#)

Infineon Technologies Corporation  
144-LQFP



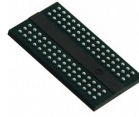
[XMC4300F100F256AAXQMA1](#)

Infineon Technologies Corporation  
100-LQFP



[XMC4300F100K256AAXQMA1](#)

Infineon Technologies Corporation  
100-LQFP



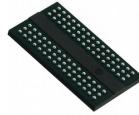
[XMC4700E196K2048AAXQMA1](#)

Infineon Technologies Corporation  
196-LFBGA



[XMC4500F144K1024ACXQMA1](#)

Infineon Technologies Corporation  
144-LQFP



[XMC4800E196K2048AAXQMA1](#)

Infineon Technologies Corporation  
196-LFBGA



[XMC4700F100K2048AAXQMA1](#)

Infineon Technologies Corporation  
100-LQFP