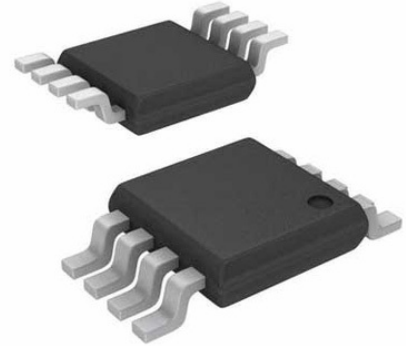


RMS to DC Converter, 0.1 %, 200 kHz, -40 °C, 85 °C, MSOP, 8 Pins

Manufacturers	Analog Devices, Inc
Package/Case	TSSOP-8
Product Type	PMIC - RMS to DC Converters
RoHS	Pb-free Halide free
Lifecycle	



Images are for reference only

Please submit RFQ for LTC1967CMS8#PBF or [Email to us: sales@ovaga.com](mailto:sales@ovaga.com) We will contact you in 12 hours.

[RFQ](#)

General Description

The LTC1967 is a true RMS-to-DC converter that uses an innovative delta-sigma computational technique. The benefits of the LTC1967 proprietary architecture when compared to conventional log-antilog RMS-to-DC converters are higher linearity and accuracy, bandwidth independent of amplitude and improved temperature behavior.

The LTC1967 operates with single-ended or differential input signals (for EMI/RFI rejection) and supports crest factors up to 4. Common mode input range is rail-to-rail. Differential input range is 1VPEAK, and offers unprecedented linearity. The LTC1967 allows hassle-free system calibration at any input voltage.

The LTC1967 has a rail-to-rail output with a separate output reference pin providing flexible level shifting; it operates on a single power supply from 4.5V to 5.5V. A low power shutdown mode reduces supply current to 0.1µA.

The LTC1967 is packaged in the space-saving MSOP package, which is ideal for portable applications.

Features

High Linearity:

0.02% Linearity Allows Simple System Calibration

Wide Input Bandwidth:

Bandwidth to 0.1% Additional Gain Error: 40kHz

Bandwidth Independent of Input Voltage Amplitude

No-Hassle Simplicity:

True RMS-DC Conversion with Only One External Capacitor

Delta Sigma Conversion Technology

Low Supply Current:

330 μ A Typ

Ultralow Shutdown Current:

0.1 μ A

Flexible Inputs:

Differential or Single Ended

Rail-to-Rail Common Mode Voltage Range

Up to 1VPEAK Differential Voltage

Flexible Output:

Rail-to-Rail Output

Separate Output Reference Pin Allows Level Shifting

Small Size:

Space Saving 8-Pin MSOP Package

Related Products



[LT3763EFE](#)

Analog Devices, Inc
TSSOP28



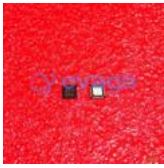
[LT1038CK](#)

Analog Devices, Inc
TO-3

Application

True RMS Digital Multimeters and Panel Meters

True RMS AC + DC Measurements



[LTC4417IUF](#)

Analog Devices, Inc
QFN-24



[LTC3440EMS](#)

Analog Devices, Inc
MSOP10



[LTC1966CMS8#PBF](#)

Analog Devices, Inc
MSOP-8P



[LTC2990IMS#PBF](#)

Analog Devices, Inc
10MSOP



[LTM8045EY#PBF](#)

Analog Devices, Inc
BGA40



[LT4295IUFD#PBF](#)

Analog Devices, Inc
28-WFQFN