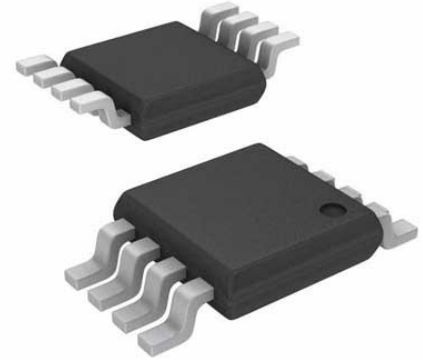


Current Sense Amplifier, Extended Input Range, 1 Amplifier, MSOP, 8 Pins, -40 °C, 125 °C

Manufacturers	Analog Devices, Inc
Package/Case	8-MSOP
Product Type	Amplifier ICs
RoHS	Pb-free Halide free
Lifecycle	



Images are for reference only

Please submit RFQ for LT6105HMS8#PBF or [Email to us: sales@ovaga.com](mailto:sales@ovaga.com) We will contact you in 12 hours.

[RFQ](#)

General Description

The LT6105HMS8#PBF is a high-side current sense amplifier that offers high accuracy and precision in measuring current. It is designed to monitor current levels in various applications and provide a voltage output that is proportional to the sensed current.

Features

- High-side current sense amplifier IC
- High accuracy and precision in current sensing
- Wide common-mode input voltage range
- Low input offset voltage
- Low input bias current
- Rail-to-rail input and output capability
- Wide supply voltage range

Application

- Power management systems
- Battery chargers
- Motor control systems
- Overcurrent protection circuits
- Current monitoring in industrial equipment
- Automotive systems
- LED lighting applications

Related Products



[LTC1151CSW#PBF](#)

Analog Devices, Inc
SOIC-16



[LT1498CS8](#)

Analog Devices, Inc
SOP-8



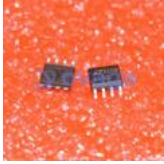
[LTC2053CMS8](#)

Analog Devices, Inc
MSOP8



[LT1491ACS](#)

Analog Devices, Inc
SOP14



[LTC1150CS8](#)

Analog Devices, Inc
SOP8



[LTC1150CN8](#)

Analog Devices, Inc
DIP8



[LT6105IMS8](#)

Analog Devices, Inc
MSOP-8



[LT1013CN8](#)

Analog Devices, Inc
DIP-8