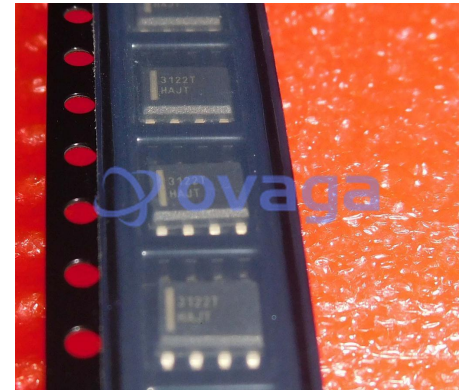


Single 9A High-Speed Low-Side Gate Driver; Package: 8-SOIC; Container: Tape & Reel, MOSFET & Power Driver ICs Single 9A High Speed Low Side Gate

Manufacturers	<u>ON Semiconductor, LLC</u>
Package/Case	SOIC-8
Product Type	Power Management ICs
RoHS	Rohs
Lifecycle	



Images are for reference only

Please submit RFQ for FAN3122TMX or [Email to us: sales@ovaga.com](mailto:sales@ovaga.com) We will contact you in 12 hours.

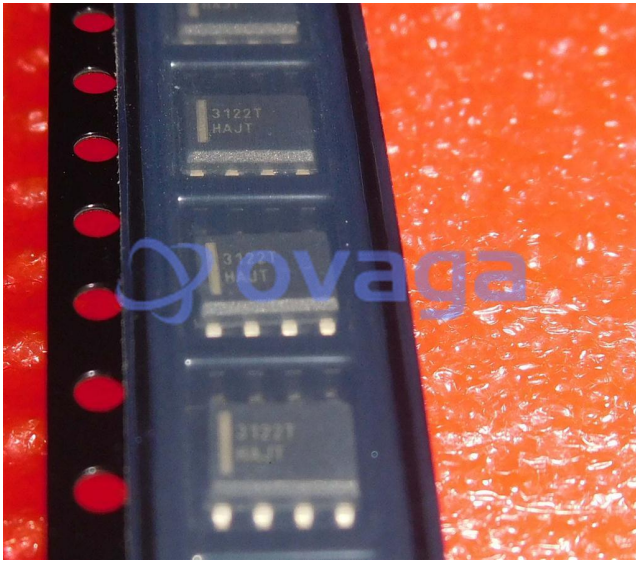
[RFQ](#)

General Description

The FAN3121 and FAN3122 MOSFET drivers are designed to drive N-channel enhancement MOSFETs in low-side switching applications by providing high peak current pulses. The drivers are available with either TTL (FAN312xT) or CMOS (FAN312xC) input thresholds. Internal circuitry provides an under-voltage lockout function by holding the output low until the supply voltage is within the operating range. FAN312x drivers incorporate the MillerDrive™ architecture for the final output stage. This bipolar / MOSFET combination provides the highest peak current during the Miller plateau stage of the MOSFET turn-on / turn-off process. The FAN3121 and FAN3122 drivers implement an enable function on pin 3 (EN), previously unused in the industry-standard pin-out. The pin is internally pulled up to VDD for active HIGH logic and can be left open for standard operation. The FAN3121/22 is available in a 3x3mm 8-lead thermally-enhanced MLP package or an 8-lead SOIC package.

Application

ONSEMI



Related Products



[FAN7602CMX](#)

ON Semiconductor, LLC
SOIC-8



[FAN7621BSJX](#)

ON Semiconductor, LLC
SOP-16



[FAN3223TMX](#)

ON Semiconductor, LLC
SOIC-8



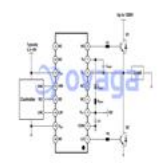
[FAN48630UC50X](#)

ON Semiconductor, LLC
WLCSP-16



[FAN7930BMX](#)

ON Semiconductor, LLC
SOP-8



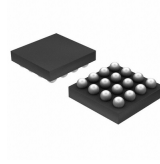
[FAN73912MX](#)

ON Semiconductor, LLC
SOIC-16



[FAN7361MX](#)

ON Semiconductor, LLC
SOP-8



[FAN53611AUC18X](#)

ON Semiconductor, LLC
6-UFBGA, WLCSP